



ALTINYALDIZ®

Uluslararası Uzay Sistem Konstrüksiyonları Sanayi ve Ticaret Anonim Şirketi
International Space Frame Construction Industry and Commerce Joint Stock Co.

ISO 9001 | OHSAS 18001 | ISO 14001 | EN 3834 | EN 1090-1 | GOST-R | NB 2163



TÜRK YAPISAL
ÇELİK DERNEĞİ

Quality & Safety in Space Frame Systems since 1970



Advantages of Space Frame Systems

- Lower infrastructure costs due to light structure
- Cost advantage compared to steel and concrete structure systems
- Allowance for different geometric design solutions
- Continious design & engineering support from our experienced technical team
- Accurate manufacturing and installation
- Easy adaptation & connection to steel and reinforced concrete beams and columns
- Facilitation to connect suspended ceilings & ventilation systems due to modular structure
- Hot dipped galvanized & powder coated fabrication against corrosion
- Advantage of painting inner sides of pipes with primer by special equipment against corrosion
- Easy transportation
- Short construction period at site
- Easy and fast disassembly

Fields of Activities

- | | |
|---------------------------|--------------------------|
| • Cement Plants | • Sports Halls |
| • Coal and Sulphur Plants | • Logistics Facilities |
| • Swimming Pools | • Entertainment Halls |
| • Shopping Malls | • Multipurpose Halls |
| • Military Facilities | • Airports |
| • Aircraft Hangars | • Showrooms and Museums |
| • Terminal Buildings | • Ice Hockey Arenas |
| • Mosques | • Storage Buildings |
| • Industrial Buildings | • Cold Storage Buildings |



1. Aircraft Hangar – Dubai - United Arab Emirates.
2. MCM Aircraft Hangar – Malta.
3. Ice Hockey Arena – Khanty Mansiysk - Russian Federation.
4. Cairo International Airport – Cairo - Egypt.
5. Bim Store – Torbali - Turkiye.
6. Coconut Oil Factory – Akwa Ibom - Nigeria.
7. Cirque Arena – Ashgabat - Turkmenistan.
8. King Saudi University Stadium – Riyadh - Saudi Arabia.



9. TUYAP Fair & Exhibition Center – Istanbul - Turkiye. 10. Truck Garage – Karbala - Iraq.
 11. Sonmez Cement Plant – Adana - Turkiye. 12. Akçansa Cement Plant – Canakkale - Turkiye.
 13. Ruwais Sulphur Handling – Abu Dhabi - U.A.E. 14. Limak Anka Cement Plant – Ankara - Turkiye.
 15. Ataturk Int. Airport New Terminal – Istanbul - Turkiye. 16. Tbilisi International Airport – Tbilisi - Georgia.

17. Terzi Baba Mosque – Erzincan - Turkiye. 18. Financial Bank District – Almaty - Kazakhstan.
 19. Turkish Metal Cyndicate Sports Hall – Ankara - Turkiye. 20. Dincer Cement Plant – Bilecik - Turkiye.
 21. Duzce Cement Plant – Bolu - Turkiye. 22. Izmir Adnan Menderes Airport – Izmir - Turkiye.
 23. Sisecam Glass Factory – Eskisehir - Turkiye. 24. Soma Thermal Power Plant – Manisa - Turkiye.



25



26



33



34



27



28



35



36



29



30



37



38



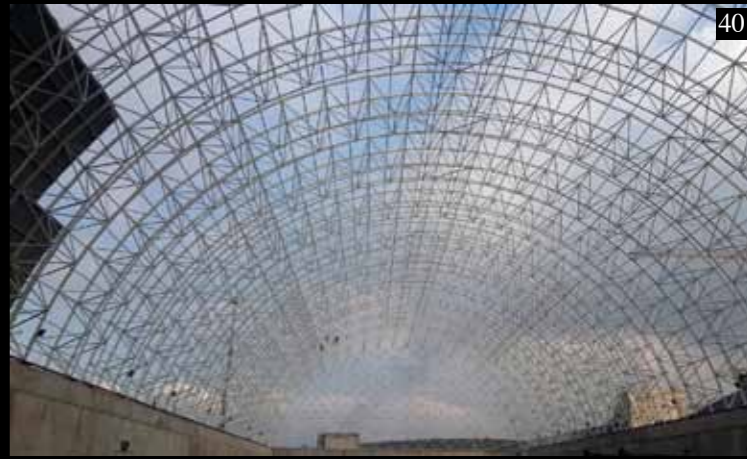
31



32



39



40

25. Identity Authority Building – Abu Dhabi - U.A.E. 26. Antalya International Airport Terminal 2 – Antalya -Turkiye.
27. Oryx International School – Doha - Qatar. 28. Salwa Dahab Mountains Water & Adventure Park - Qatar.
29. Baticim Cement Plant – Aydin - Turkiye. 30. Cimsa Cement Plant – Afyon - Turkiye.
31. Bank Muscat Headquarters Building – Muscat - Oman. 32. Tennis Court – Salamanca - Spain.

33. Sabahiya Park Pyramid – Salmiya - Kuwait. 34. Skopje International Airport - Macedonia.
35. Hippodrome Area – Ashgabat -Turkmenistan. 36. Domodedovskiy Shopping Centre – Moscow - Russian.
37. King Abdulaziz International Airport – Jeddah - Saudi Arabia. 38. Shipyard –Turkmenbashi - Turkmenistan.
39. Soma Cement Plant – Manisa - Turkiye. 40. Izdemir Coal Plant – Izmir - Turkiye.



Factory


- The biggest space frame production facility in Turkiye, Middle East and Africa
- Located on 12.500 m² land with 10.000 m² closed area
- Annual space frame production capacity of 1.000.000 m² / year
- Specialized only on manufacturing of space frame systems
- Special chemical surface treatment baths including phosphating prior to powder coating process
- Fully computerized powder coating lines
- Advantage of painting inner sides of pipes with primer by special equipment against corrosion
- 5 units of semi-automatic gas welding stations
- 4 units of 5-Axis Vertical Machining CNC Centers with double-decked pre-loading capability
- High quality control standarts, operating under ISO 9001, ISO 14001, OHSAS 18001, CE standarts & certification
- Hot dipped galvanized and powder coating space frame production upon request




Main Office: Harbiye Mah. Teşvikiye Cad. İkbal İş Merkezi No:17 Kat: 5 Daire: 22-23 / 34367 Teşvikiye / İstanbul / Turkiye
Tel: +90 212 261 84 48 Fax: +90 212 258 81 09 info@altinyaldiz.com.tr www.altinyaldiz.com.tr

Factory: Cumhuriyet Mah. Güler Sok. No:26 / 41435 Çayırova / Kocaeli / Turkiye Tel: +90 262 658 07 60 info@altinyaldiz.com.tr www.altinyaldiz.com.tr

 ALTINYALDIZ  ALTINYALDIZ INTERNATIONAL SPACE FRAME

 altinyaldiz_spaceframe

 ALTINYALDIZ INTERNATIONAL SPACE FRAME CONSTRUCTIONS

 altinyaldizuzay